



SUPERIOR COURT OF CALIFORNIA
COUNTY OF SACRAMENTO

Date Prepared: May 2010. Page 1 of 3
**Sacramento County Grand Jury Demographic Summary Report
July 1, 2009**

The Sacramento County Grand Jury is a body comprised of qualified persons drawn from the citizens of the county, who have volunteered or been selected at random, and nominated by a judge of the Superior Court. Each year a Grand Jury of 19 such individuals is drawn from prospective grand juror nominations. As the population of Sacramento County grows, the demographic composition is subject to change. Accordingly, outreach efforts continue to elicit eligible, qualified and competent individuals from a cross-section of the population in order to compose a diverse and representative Grand Jury pool as illustrated in figure 1 below. The data represents the July 1, 2009 Prospective Regular Grand Jurors.

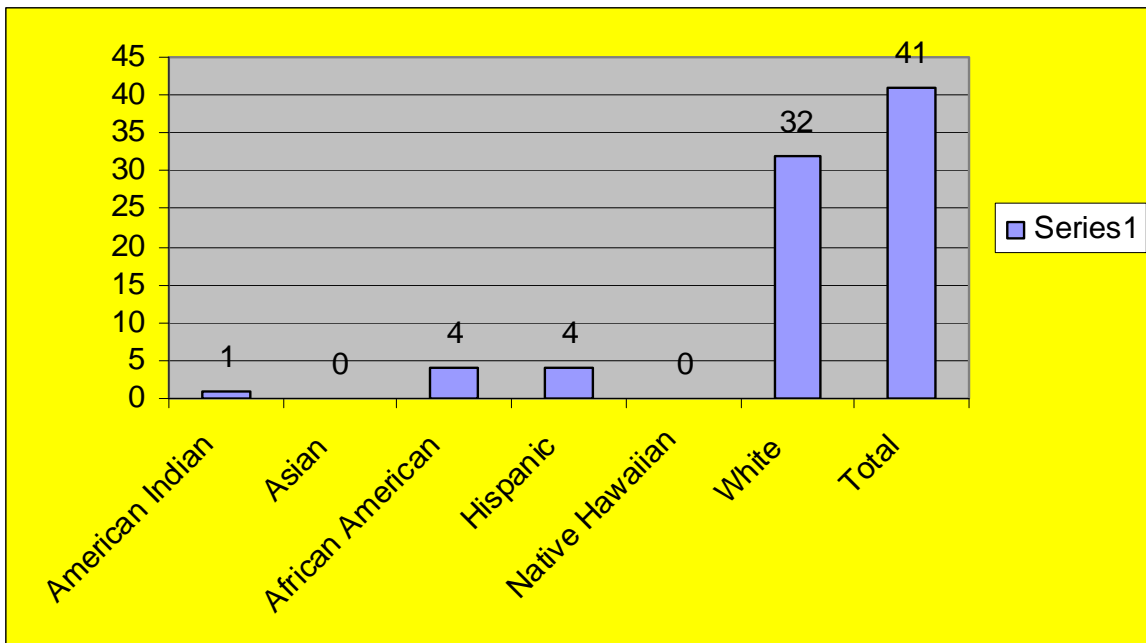
In fact, demographics are the focus of a new mandate issued by the Judicial Council of California. Effective January 1, 2007, Rule 10.625 of the California Rules of Court requires the jury commissioner or designee to collect certain demographic data from prospective regular grand jurors and maintain this information in a database and that an annual summary be made available to the public.

In compliance with the requirements, demographic information is summarized in the charts displayed below. Please contact the Sacramento County Grand Jury Coordinator at 916.874.7559 if you have any questions or requests concerning this data.

SUPERIOR COURT OF CALIFORNIA
COUNTY OF SACRAMENTO

Prospective regular grand juror means those citizens who (a) respond in person to the jury summonses or questionnaires from the court for the purposes of grand jury service and are eligible to serve as regular grand jurors, or (b) either submits an application, are recruited, or are nominated by judicial officers and are eligible to serve as regular grand jurors.

Figure 1: Displays the Ethnicity Percentage of 41 Prospective Regular Grand Jurors.



Sacramento County Grand Jury Database, July 1, 2009 * Note: Of the forty one Prospective Grand Jurors, three individuals were carried over from the prior Grand Jury year.

Figure 2: Displays Age Ranges of 41 Prospective Regular Grand Jurors as a percent.

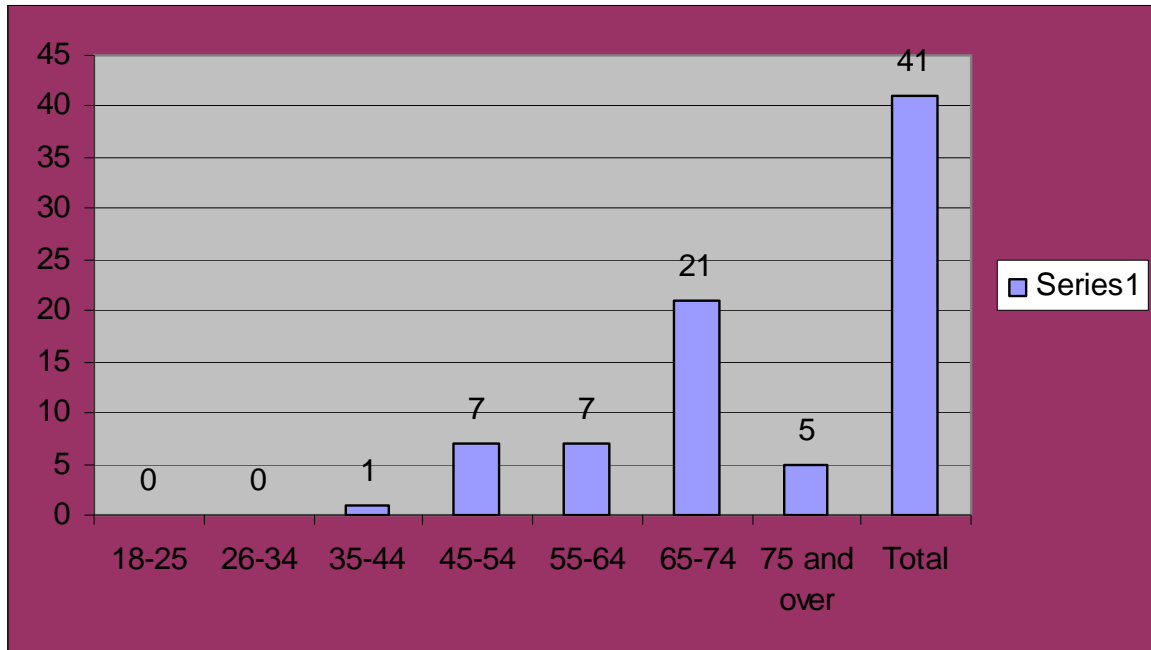


Figure 2: Displays the Gender of 41 Prospective Regular Grand Jurors as a percent.

